

23

COMPETITION HANDBOOK

- INDUSTRY LEADING PROGRAM
- UNMATCHED OPPORTUNITIES
- EXPERIENCED STAFF
- AMAZING STAFF
- INCREDIBLE TEAMS
- ♥ ALLSTARSPORT.CO.NZ

WELCOME

As we head into our 20th year of All Star, I am reflecting on what an amazing journey it has been. We have had over 25,000 athletes come through our doors. We have won countless competitions, grand championships and world titles. But what warms my heart the most is the amazing resilient and confident young people we help to make. I have had the privilege of attending to two former cheerleader weddings this year and what I loved was that they have been filled with cheerleader bridesmaids and groomsmen. At All Star amazing friendships are born, our athletes have found their tribe and they get to build lifelong bonds.

Wow, what a year 2022 has been!! After two years of covid disruptions, the joy of being back in the gym and at in person events has made 2022 a year to remember. Each

and every athlete has shown resilience, perseverance and passion and every team really put on a show this event season. We are all super excited to start our 20th Season, we know that we have the winning combination of experience, consistency, quality and care that it takes to build amazing athletes but even more important incredible young people.

We warmly welcome all families looking to join us for the 2023 competition season and encourage you all to please read our competition handbook thoroughly.

Kimberley & The All Star Team xxx



WAYS TO PARTICIPATE

There are 2 different ways you can participate in competition cheerleading:

CheerSPORT Grades 1-6:

I want to do competitive cheerleading but I want the focus to be fun. I want to be able to have a go at competing all elements of a cheerleading routine. I want to be able to work on progressing my skill level but have the flexibility to attend other commitments on an as needed basis. I am able to commit to regional and limited national travel.

EliteCHEER:

I want to be a New Zealand Representative cheerleader and dream of being a World Championship or Olympic level athlete. I am ready to attend all scheduled practices, competitions and events. I am able to commit to national and overseas travel.

We encourage our families to choose the competition cheer option which best suits their time and financial needs together with what you hope to get out of your competitive experience long term. Athletes are free to move between CheerSPORT and EliteCHEER each season i.e. If you were an elite cheerleader this season you are welcome to move to CheerSPORT and vice versa.

COMMITMENT

Cheerleading provides a unique opportunity to teach the value of commitment. Being a part of a team means being a part of something much bigger than yourself. Unlike other team sports, every team member and every position on a team is equally important.

We ask our athletes to be at all scheduled trainings, performances and competitions, however, we also understand that our athletes need to be happy and healthy.

This means we will not require you to train when you have a contagious illness, on most public holidays and school holidays (Except for the 2nd week of Term 3 school holidays). If your child is unable to attend practice on short notice please contact your team coach(es) by text message or phone call.

ABSENCES PRIOR TO COMPETITIONS

To ensure your team is set up for success, absences 3 weeks prior to any competition may mean your position(s) change in your routine.

WEEKLY TRAINING COMMITMENT

CheerSPORT Grade 1:	1x 1hr team training
CheerSPORT Grades 2-6:	1x 1hr30 team training
Novice <i>*At selected gyms</i>	1x 2hr team training and 1x 1hr tumble class
Elite Level 1-6:	2x 2hr team training and 1x 1hr tumble class

Elite and Novice athletes are required to take the set number of tumbling classes stated above with All Star unless they are trialling for a non-tumbling team. Athletes who do not wish to book into a tumbling class should choose our CheerSPORT pathway which focuses on stunt/performance based progression.

TRY OUTS

Tryouts are an exciting time of year when new and current EliteCHEER team members are placed on their team for the upcoming season. Our experienced staff take great care to create the best teams possible at every All Star location. Athletes are only required to attend team placements if they wish to be placed on an Elite team (includes Novice). CheerSport athletes do not need to attend team placements.

DOES EVERYONE MAKE A TEAM?

Every child will be placed on a team in our programme!

HOW IS MY CHILD'S TEAM PLACEMENT DETERMINED?

Tryouts can be a difficult time for athletes as they result in change. No athlete will be passed over due to favoritism or personal reasons. An athlete's position on a certain team will be determined by their tumble and stunting ability with reference to the IASF level system. Attendance and coachability of the athlete will also be considered.

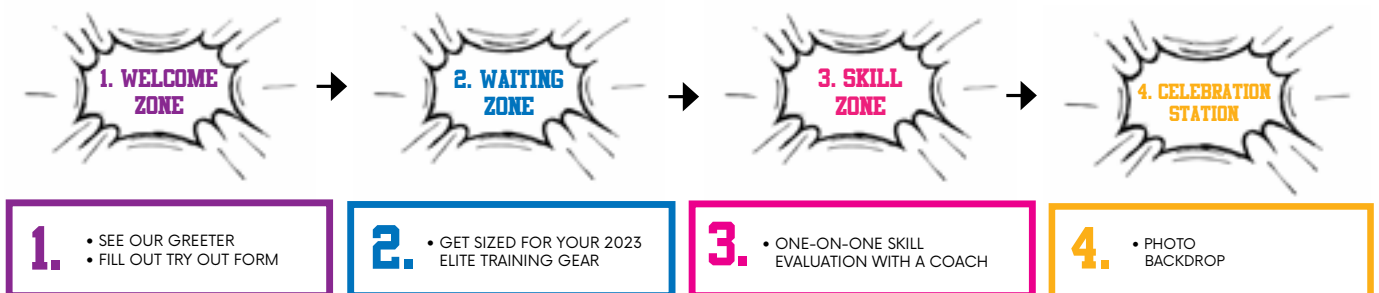
PROGRESSION

After years of experience we have learnt that it is not in the best interests of our athletes to fast track their cheerleading careers. We hope all our athletes will stay in the sport for many years, perhaps as long as some of our Team NZ Cheerleaders whose average age is 18 years!

We have learnt the more time spent at each level makes our cheerleaders stronger physically and mentally. We want our cheerleaders to enjoy their time with us and we have found that moving athletes too soon can result in cheerleaders being burnt out from the pressure.

There are always new skills to be learnt at each level particularly as rule changes continue to raise the skill difficulty allowed. The complexity of choreography required to be competitive at each level is also constantly rising. For cheerleaders this means new challenges regardless of the length of time they spend at any one level.

PROCESS ON THE DAY



RESULTS

Tryout results will be released within the seven days following your team placement date. Try out results will be posted on our facebook page. Should you have a concern in regards to your result please wait 24 hours before contacting the office by email or phone call. We will be happy to discuss your concerns with you after this time.

FINANCIAL OBLIGATIONS

Now the uncomfortable conversation – money. Unfortunately, our prices are going up. We have managed to avoid putting our prices up for 5 years, but due to rising costs and inflation we need to raise our fees. We think we offer amazing value not just athletically but even more so in the life lessons we teach our athletes and some might say that is ... priceless. 😊 However, if our increase is a struggle for you please contact us and we will see how we can help you.

Team/Class Type	Cost	Details
CheerSPORT 1	\$210 per term	Includes: 10 x 1hr/week (previously 9 weeks) team tuition, Choreography and music, Cheerbrandz competition entry fees
CheerSPORT 2-6	\$275 per term	Includes: 10 x 1.5hr/week (previously 9 weeks) team tuition, Choreography and music, Cheerbrandz competition entry fees
Novice	\$315 per term team tuition \$160 per term compulsory tumble class \$170 Training gear pack* (\$90 in Dec/\$80 in May)	Includes: 10 x 2hrs/week team tuition, Cheerbrandz NZ competition entry fees
Elite Level 1-6	\$545 per term team tuition \$160 per term compulsory tumble class \$480 Summer Camp \$170 Training gear pack* (\$90 in Dec/\$80 in May) <i>*These will automatically be invoiced.</i>	Includes: 10 x 4hrs/week team tuition, Cheerbrandz NZ Competition entry fee
Tumble	\$160 per term	10 x 1hr/week tuition (Previously 9 weeks)
Development Academy Team	Tiaras: \$250 per term Miss Majesty: \$250 per term	10 x 2hrs/week team tuition, choreography, music, competition showcase fees
NEW Development Academy Tumble invite only	\$200 per term	10x 2hrs/Week

OTHER FINANCIAL OBLIGATIONS MAY INCLUDE:

- CheerSPORT competition uniform (\$175)
- Elite Competition Uniform (\$350 approx.)
- Australian Competition Entry Fees (\$35-\$120)
- Additional non-Cheerbrandz NZ Competitions (\$65-\$120)

- Competition hair accessory (\$35)
- Competition Make-up
- Replacement gear
- Travel costs to and from competitions outside of Auckland
- Team outings and bonding days.
- Music (\$85-\$150)

Pricing correct as at 2 November 2022, subject to change.

FINANCIAL OBLIGATIONS

TRAINING GEAR PACK

All elite development and elite athletes are required to purchase the new season elite gear pack (both summer and winter). A sizing chart and tape measure will be available at tryouts, please check your sizes carefully and write these on your tryout form. You will then be invoiced automatically by head office for your gear packs. Please make sure to pay on time to receive your gear pack on time.

Summer Pack (Pay in December after Tryouts) \$90 - Receive at Summer Camp.
 Winter Pack (Pay in Early May) \$80 - Receive in Early June.

- SUMMER Girls Pack Includes: Hair Accessory | Crop Top | Singlet • Boys Pack Includes: 2 Singlets.
- WINTER Girls and Boys Packs include: Hoodie and T Shirt.
- OPTIONAL ITEMS: Spankies | Baseball Shirt

SUMMER SET

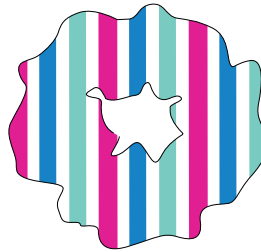
Girls: Crop



Singlet



Scrunchie



Boys: x2 Singlets



WINTER SET

Zip Hoodie



AS Tee



OPTIONAL ITEMS

Girls: Shorts



Baseball Shirt



Baseball Shirt Cropped



\$35

\$75

\$75

FINANCIAL OBLIGATIONS

COMPETITION UNIFORM

All athletes are required to purchase and wear a competition uniform if you don't already have the correct one for your gym/team type. Competition uniforms are not the same as the training gear pack. Your competition uniform is a beautiful sparkly dress in your gyms colours. All competition uniforms are ordered via www.diamond-fit.com

COMPETITION TEAM BOW/CUFF

Unless your competition uniform design is changing or you have changed to a team/gym with a different bow, you do not need to order a new competition bow/cuff. Competition bow/cuff orders are placed directly with Better with a Bow through their website: www.betterwithabow.co.nz

CHEER SHOES

It is recommended that all cheerleaders have cheer specific shoes. All Star recommends Infinity Evolutions, Flytes, Beasts and Titans which are available from most online cheer retailers. Please check with your gym manager whether white or black coloured shoes are preferred.

SUMMER CAMP:

Who: AKL Elite 1-6,

When: 18-21st January 2023

Where: YMCA Camp Adair, Hunua

Cost: \$480/Athlete Due: 16 December 2022

Camp is where elite team members learn, upgrade & perfect their routine & skills with some of the best in the business! Our camp choreographers & coaches help create custom routines which show off each team's skills and ability. Athletes participate in fun team bonding activities and finish their experience with skits and a traditional camp fire. Attendance is compulsory to ensure your team gets the very best start to their season.

IMPORTANT: A \$180 choreography fee is applicable to all athletes not attending camp.

INVOICES

Invoices are sent out 2 weeks prior to the first class of each term. Unfortunately, unused portions of your invoice are non-refundable e.g. choreography and competitions.

MUSIC

Please note: Music will be charged seperately.

PAYMENT OPTIONS

Preferred Method: Internet Banking

All Star Cheerleaders 03-1322-0077400-00

Include Cheerleaders First and Last Name, Gym Name

(eg. Jo Smith, Legacy)

Credit Card: Call 09 444 5597.

Please note a credit card processing fee will apply.

GENOAPAY:

Pay off your fees over 10 weeks with genoapay.

Visit www.genoapay.com to check your eligibility and read the terms and conditions.

NO CASH/CHEQUE:

We do not accept cash or cheque payments.

COMPETITION SCHEDULE

Competition	No. of Days	Comp Dates	AUCKLAND CS	AUCKLAND NOVICE	AUCKLAND ELITE
Eutopia, Auckland	1	25 June	😊	😊	😊
United Cheer & Dance Competition, Wellington (TBC)	1	2 July	N/A	N/A	TBC
D + C Global Games, Hawaii	5	19 May	N/A	N/A	😊
Majors, (previously Olympia) Auckland	2	19 August	😊	😊	😊
Spring Carnival, Auckland	1	17 September	😊	😊	😊
Super Nationals, Auckland	2	4 & 5 November	😊	😊	😊

😊 = ATTENDING IN PERSON

COMPETITIONS

All competition team members are required to attend all competitions selected for their team on the competition schedule above.

Competitions are a great learning experience for our athletes and provide them with the opportunity to build confidence, learn about sportsmanship and show off their skills.

NOTE: performances and events may be scheduled in your location in addition to the above listed competitions.



IMPORTANT DATES

MONTH	IMPORTANT DATES
JANUARY	16: Term 1 starts for EliteCHEER 18-21st: Summer Camp 30: Auckland Anniversary Day, gym closed 31: Term 1 starts for FLD, CheerSPORT & Tumble
FEBRUARY	6: Waitangi Day observed, gym closed
APRIL	6: Term 1 ends for all 22-24: IASF Cheerleading Worlds
MAY	1: Term 2 starts for all 19: Global Games Hawaii
JUNE	5: Kings's Birthday gym closed 18/19: Gym Showcases (TBC) 25: NZ Eutopia Cheer & Dance, Auckland
JULY	2: United Cheer & Dance competition, Wellington (TBC) 2: Term 2 ends for all 17: Term 3 starts for all
AUGUST	19-20: NZ Majors, Auckland (previously Olympia)
SEPTEMBER	17: NZ Spring Carnival, Auckland 24: Term 3 ends for ALL
OCTOBER	2: Term 4 starts for all 24: Labour Day observed, gym closed
NOVEMBER	4 & 5: NZ Super Nationals, Auckland
DECEMBER	10: Term 4 ends for all

** Please note we aim to keep these dates set, but things sometimes change. If we do make changes we will advise you.*

ATHLETE CODE OF CONDUCT

Being part of our All Star family means you are now an ambassador for cheersport in New Zealand. This means you will be held to the highest standard of behavior when attending any All Star events including practices, competitions, social events and performances.

1. BE A GOOD SPORT

Win and lose graciously, respect others and the rules.

2. SAFETY IS IMPORTANT

Do not teach or spot any form of cheerleading/gymnastics or use the gym equipment without a coach.

3. COMMITMENT

Be present at all trainings, performances and competitions.

4. UNIFORM

Wear the right gear, hair tied up, no jewellery, keep nails short, cheer shoes on.

5. KEEP THE GYM BEAUTIFUL

Place personal items in the cubby holes and not on the gym floor. Place all rubbish in designated rubbish bins.

6. BE READY TO WORK HARD

Arrive 10 minutes in advance of your class time, change into appropriate practice gear with jewellery removed.

7. BE A GREAT TEAM MATE

Use appropriate language towards coaches, athletes and parents or staff members. Cooperate and participate positively and be kind to one another.

8. SOCIAL MEDIA IS NOT PRIVATE

(a) Do not post content that may damage the reputation or interests of All Star Cheerleaders, Cheerbrandz or an affiliated person, whether intentionally or unintentionally, or otherwise bring any one of them into disrepute.

(b) Be polite avoid hostile communications or credibility attacks. Keep all comments respectful and informative.

(c) If you offer your personal view on a matter, your comments or opinion must not cause damage to All Star Cheerleaders, Cheerbrandz or any affiliated entities or person(s).

(d) Do not post content or images that harass, are inappropriate, adverse, offensive, discriminatory, intimidating or are otherwise demeaning, defamatory or disparaging about any person or organization. For the avoidance of doubt this includes videos, comments or images regarding falls, "fails", accidents, physical injury and negative posts regarding competition results or outcomes.

(e) Only post accurate and truthful content. You must correct any errors or remove any offending/inaccurate posts immediately if requested to do so by All Star Cheerleaders and/or Cheerbrandz or its employees.

(f) Do not violate a person's privacy. Do not post any one else's personal information or their image without obtaining their prior consent.

(g) Do not use the intellectual property of All Star Cheerleaders, Cheerbrandz or any affiliated entity including any trade marks, logos, slogans, patents, designs, copyright materials or ideas in any content or otherwise online.

(h) Do not start any page, group or forum of any kind for athletes or parents of All Star Cheerleaders or customers of Cheerbrandz without written permission. In the event such a page is approved, the General Manager and your Gym Manager must be administrators of your page or group.

(i) Be mindful whether participation in certain network groups with racist, criminal, extremist or hate group connotations may offend or cause harm to the reputation or interests of All Star Cheerleaders, Cheerbrandz or to an Affiliated Person.

(j) Please do not attribute any content or comments you may post to All Star Cheerleaders, Cheerbrandz or any affiliated person nor represent any content or comments as being endorsed by same.

9. THE NO NO LIST

All Star may dismiss or suspend without refund any athlete for the following reasons:

a) Possessing, using, or being a party to any illegal drug, controlled substance, or drug paraphernalia;

(b) Committing any act which would be considered an offence under any governing law;

(c) For attitude problems, personality conflicts and disrespectful behavior towards coaches, team management, staff, cheerleaders, parents or anyone involved with the All Star program including but not limited to derogatory remarks, spiteful comments, unsportsmanlike behavior, coercing team members to quit or join another program;

(d) Harassment either verbally, written texted, emailed, blogged or posted on the web or communicated in any other means.

TERMS AND CONDITIONS

FLD, CHEERSPORT, CHEERTUMBLE

If your child is in a FLD, CheerSPORT or Cheer TUMBLE programme these are the terms and conditions that apply to you.

PAYMENT

The Member agrees to pay the costs as detailed in our All Star invoices.

NON-PAYMENT

In the event of any amounts not being paid in accordance with the provisions of this contract All Star has the right to refuse to teach, train and or provide services to the cheerleader until such time as all outstanding amounts are paid. All Star is under no obligation to provide any abatement of fees for any time the cheerleader is not in attendance.

DEBT COLLECTION ACTION

The Member authorises All Star to contact any debt collection agency in the event any account with All Star is not paid. Should this occur the full outstanding balance for the remainder of the term including any current arrears shall be immediately due in full. In addition, All Star shall add \$50 to the outstanding debt as its fee for dealing with the default. The Member also agrees to pay all collection costs incurred. The Member also authorizes All Star and or the debt collection agency to use any and all search powers available within the law to find up to date contact details for the Member to pursue the debt.

ALL STAR RULES, POLICIES AND GUIDELINES

The Member and cheerleader agree to adhere to the rules, policies and guidelines of All Star Cheerleaders as set out in the All Star Handbook and any other rules, policies and guidelines that may be set from time to time. If a Member or cheerleader break any of the rules they may be suspended or dismissed from the team. There will be no refunds in the event of dismissal or suspension from the team.

PARENTAL/GUARDIAN RELEASE

The Member understands that the sport of cheerleading is physically demanding, and that the cheerleader must be physically fit and healthy to participate. All Star Cheerleaders follows the NCSSE, IASF and the NZCA cheerleading safety guidelines but they assume no responsibility for any accident or injury that may occur. The Member therefore releases All Star, all coaches and staff from any liability and holds them harmless against any and all injuries that might arise from participation in this program.

LOCO PARENTS

The member authorises the coach or any other staff member of All Star or other person who at the relevant time is responsible for the care of the cheerleader to act in loco parents in respect of the cheerleader in cases of accident or emergency. staff member of All Star or other person who at the relevant time is responsible for the care of the cheerleader to act in loco parents in respect of the cheerleader in cases of accident or emergency.

APPEARANCE RELEASE

The Member agrees to grant All Star, its sponsors and all media the right to photo or video the cheerleader and further utilise their face, name, likeness, voice and appearance as part of their program in all advertising.

AGREEMENT

I understand the above financial obligations and have read the terms and conditions. I agree to all the terms and conditions of the contract, I understand that you do not require to have my signature as acceptance and that acceptance is deemed through my/my child's participation. I also understand that if we wish to cancel the membership before the end of the contract period, we are liable for all money still to be paid until the end of the agreed contract.



TERMS AND CONDITIONS

ELITE CHEER

If your child is in an Elite team the above Terms and Conditions apply to you, as well as the terms listed below.

START DATE

The start date is the first elite lesson of the Season as set out in the calendar or the first elite lesson taken if starting mid-year

CONTRACT PERIOD

1 year Fixed Term Membership. If you wish to cancel before the end of the season you will be liable for all money still to be paid until the end of the agreed contract. 3. PARTIES The parties to the membership agreement are: All Star Cheerleaders Ltd ("All Star") the service provider. Cheerleader ("the Member") means the cheerleader if they are over the age of 18 or if under 18 years of age means the parents or legal guardians of the cheerleader.

CANCELLATION

If the Member wishes to cancel their membership before the end of the one year fixed contract period, they are liable for all money still to be paid until the end of the agreed contract.

CANCELLATION WAIVER

All Star may waive the cancellation condition in unforeseen circumstances at its discretion where the Member gives three months notice in writing. All fees shall continue to be paid up to the later of the date of cancellation or the 3 month notice Period. In the event of notice not being given All Star shall have the right to charge 1 term or 3 months fees (whichever is greater) in lieu of notice. Unforeseen circumstances may include serious injury or illness, moving cities, countries or serious academic issues or anything else that would create undue hardship for the Member. This waiver can be withdrawn and the contract required to be paid in full if the athlete cheers with another cheerleading company within 1 year of this waiver being granted.

TRAVEL FEES ON CANCELLATION OR DISMISSAL

In the event of the cheerleader leaving the team or canceling the contract any travel fees will be refunded less any deposit or cancellation fee plus a 10% administration fee. Any fundraising money held in the fundraising account will not be refunded but will remain in the account and will be distributed between the remaining traveling team members.

CONTRACT TERM

The term of this contract is for a fixed period of 1 year expiring 1 year from the first Elite practice. Athletes are required to commit to a full season being the calendar year of all 4 terms.

MEMBERSHIP ON HOLD

All Star may approve the holding or suspending of memberships for reasons outside the Members control for example serious injury or illness or for other reasons where advance notice has been given.

TEAM MEMBERSHIP CHANGES

All Star may change the membership of any team by adding, rearranging, or removing cheerleaders to/from teams for a performance, practice, competition or the program. All Star will attempt to make team changes as infrequent as possible and with as much notice as possible.



YMCA SUMMER CAMP PARTICIPATION AGREEMENT

If The Member is attending the All Star YMCA Summer Camp they agree to the following YMCA Camp Adair Participation Agreement – Camp Adair operates in accordance with the broader YMCA rules and guidelines. YMCA Camp Adair adheres to the core values of the YMCA - Caring, Respect, Honesty and Responsibility. Further, YMCA Camp Adair operates according to it's Safety Management system. (i) RISK ACKNOWLEDGMENT: I understand there are risks involved in the activities my child/I will be undertaking. I also understand that an unpredictable or uncontrollable event may occur that could possibly cause me serious harm or death. I'm aware of the importance of my child/my voluntary participation and the consequences should they/I ignore the YMCA Instructor's directions. I acknowledge that the organisation is responsible for all risk management for every person on site and will take all reasonable and practicable steps to keep my child/I safe while they/I am involved in these activities. However, I accept full responsibility for my child/my own actions or inaction. (ii) ADVENTURE ACTIVITIES: I understand that I / my child will be participating in all or some of the following Adventure Activities: High Ropes, Abseiling, Zip Line, Climbing wall, Kakaying, Archery, Target shooting, Confidence course, River Traverse. Hiking. I have been fully informed on each activity and accept the risks. (iii) GEAR MANAGEMENT During the period of the programme you may be issued with and be using various forms of equipment. Whilst under your care or use, you will be totally responsible for its condition. This means that should you break or damage any equipment, by any means other than an accident or by normal wear and tear, you will be required to pay for it. We are sure that during the normal running of the programme and with a sensible attitude no problems of this nature will arise. (iv) YMCA APPEARANCE RELEASE: I give permission for photos to be taken for the purpose of promoting Camp Adair at the discretion of the YMCA. (v) DECLARATION: I have read, and understood, and agree to the above. I also agree to follow all rules and other guidelines set out to me, and agree to the YMCA core values of Caring, Respect, Honesty, Responsibility, and agree to listen to all staff and supervisors at all times. I acknowledge that if I cannot follow these, and I am not prepared to remedy the problem I will be expected to leave the programme.

SPECTATOR / SUPPORTER CODE OF CONDUCT

1. Be kind and supportive to all athletes, parents and coaches, we are all on the same side.
2. Please stay in the designated viewing area at all times.
3. Please do not drink or be under the influence of alcohol, drugs or other illicit substances in or around any All Star Cheerleaders venue.
4. Please respect the gym environment by leaving any viewing areas in a tidy state including picking up all rubbish and any belongings.

FEEDBACK

All Star values your feedback so we ask that you refer any issues, queries or questions directly to All Star via email, meeting or phone call.

Email: office@allstarcheerleaders.co.nz

or call 09 444 5597 or
0800 CHEERLEADER.

